

**MECHANICAL
SWITCHES**

Reliability You Need, Performance You Trust.

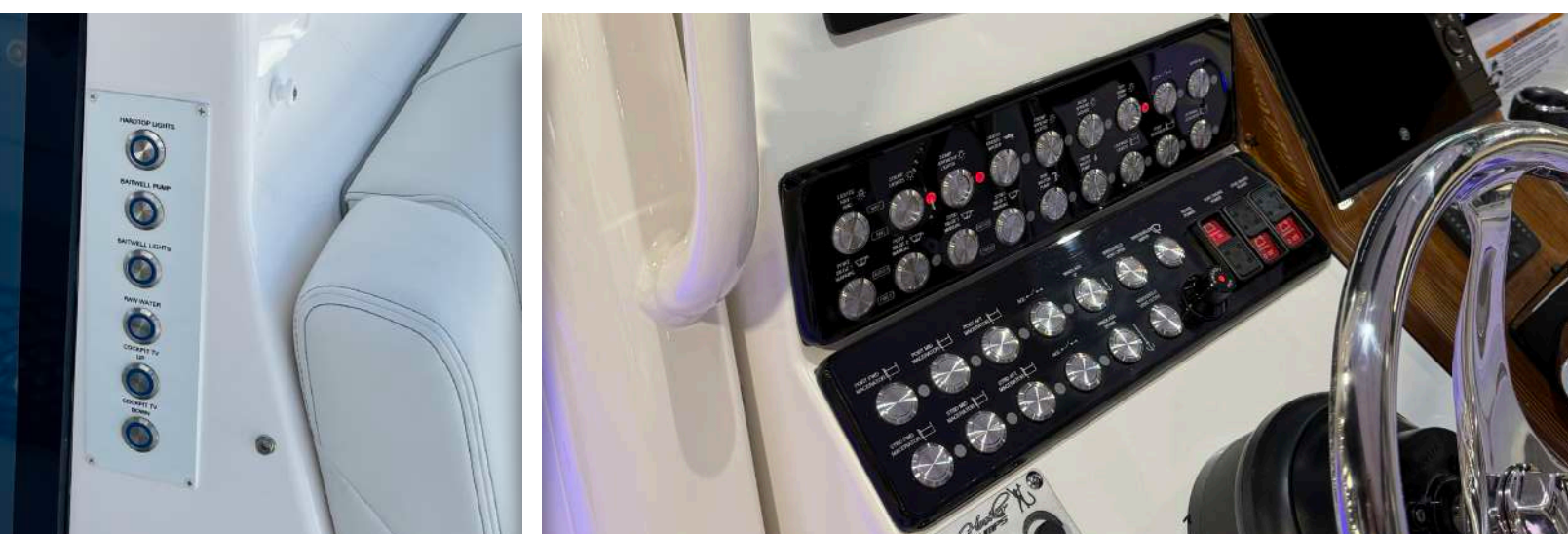
Bluewater Enterprises offers a reliable selection of **mechanical switches** and **pre-wired switches** designed for durability and ease of installation. Available in both **19mm** and **22mm** sizes, our mechanical switches deliver a solid tactile response, making them ideal for high-vibration marine environments. For added convenience, our wired versions come pre-assembled with high-quality marine-grade leads, saving time and ensuring consistent performance in tight or complex installations.



Mechanical Switches

THINGS TO KNOW

- **Mechanical vs. Electrical Switches:** Mechanical switches toggles or rockers control systems through direct physical connections. Electrical switches use electrical signals to activate components without a direct mechanical link.
- **Back Tabs:** Switches have different back tab configurations with 2, 3, or more terminals depending on their function. These variations allow for features like LEDs or multiple control positions.
- **Momentary vs. On/Off Functions:**
Momentary switches activate only while pressed, ideal for functions like horns or starters.
On/Off switches stay in position and are used for devices like lights and bilge pumps.

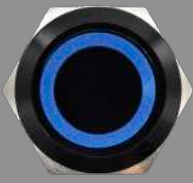


19mm Switches

BACK TABS



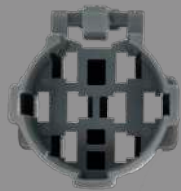
Style: SS w/ Blue Ring
LED Color: Blue
Back Tab: 3
9150-1000 (On/Off)
9150-2000 (Momentary)



Style: Black w/ Blue Ring
LED Color: Blue
Back Tab: 3
9150-1030 (On/Off)
9150-2030 (Momentary)



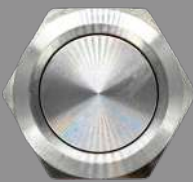
Style: SS w/ Knob
LED Color: None
Back Tab: 3
9150-1107



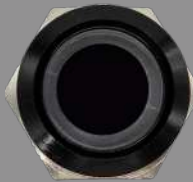
Connector
Wires: None
19mm
9150-6001



Button: SS w/ Translucent Center
LED Color: RGB
Back Tab: 4
9150-1003 (On/Off)
9150-2003 (Momentary)



Button: Machined Head
LED Color: None
Back Tab: 1
9150-1045 (On/Off)
9150-2045 (Momentary)



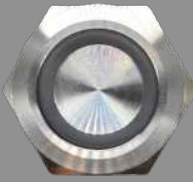
Button: Black w/ Translucent Ring
LED Color: Blue
Back Tab: 3
9150-1130 (On/Off)
9150-2130 (Momentary)



Connector
Wires: 6"
19mm
9150-6006



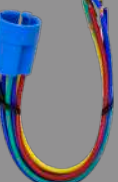
Button: SS w/ Translucent Center
LED Color: Blue/Green
Back Tab: 3
9150-1003-A (On/Off)
9150-2003-A (Momentary)



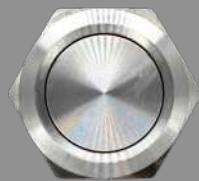
Button: SS w/ Translucent Ring
LED Color: Blue
Back Tab: 3
9150-1100 (On/Off)
9150-2100 (Momentary)



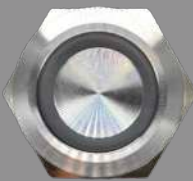
Button: Black w/ Translucent Ring
LED Color: Red
Back Tab: 3
9150-1131 (On/Off)
9150-2131 (Momentary)



RGB Connector
19mm
9150-6306 (6" Wire)
9150-6306C (12" Wire)



Button: Machined Head
LED Color: None
Back Tab: 2
9150-1005 (On/Off)
9150-2005 (Momentary)



Button: SS w/ Translucent Ring
LED Color: RGB
Back Tab: 3
9150-1103 (On/Off)
9150-2103 (Momentary)



Buzzer
Style: Stainless Steel
LED Color: Red
9150-7701

Connectors

22mm Switches

BACK TABS



Buzzer
LED Color: Red
Back Tab: 1
9050-7701



Switch 3V
Button: SS w/ Translucent Center
LED Color: Blue/Red
Back Tab: 2
9051-7002-003 (Momentary)



Double Lock
Button: SS w/ Blue Ring
LED Color: Blue
Back Tab: 3
9151-1010 (On/Off)



Connector
Wires: 12"
22mm
9151-6312



Anti-Vandal Switch
Button: SS w/ Translucent Center
LED Color: Blue/Red
Back Tab: 2
9051-1114 (On/Off)
9051-2114 (Momentary)



Switch w/o Jumpers
Button: SS w/ Translucent Center
LED Color: Blue/Red
Back Tab: 2
9051-7071 (On/Off)



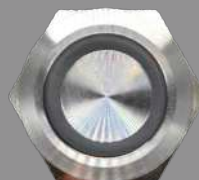
Switch w/Harness
Button: SS w/ Blue Ring
LED Color: Blue
Back Tab: 3
9151-1010-BATT-12 (On/Off)



Switch w/ Jumpers
Button: SS w/ Translucent Center
LED Color: Blue/Red
Back Tab: 2
9051-7001 (On/Off)
9051-7002 (Momentary)



Engine Start/Stop
Button: SS w/ Translucent Ring
LED Color: Green
Back Tab: 4
9052-2008



Button: SS w/ Translucent Ring
LED Color: Red
Back Tab: 3
9151-2001



Switch w/ Jumpers Knurl
Button: SS w/ Translucent Center
LED Color: Blue/Red
Back Tab: 2
9051-7001-009 (On/Off)
9051-7002-009 (Momentary)



Horn
Button: SS w/ Translucent Ring
LED Color: Red
Back Tab: 4
9052-2009 (Momentary)



Double Lock
Button: SS w/ Blue Ring
LED Color: Blue
Back Tab: 3
9151-2010 (Momentary)

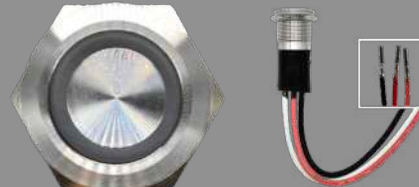
19mm Pre-Wired



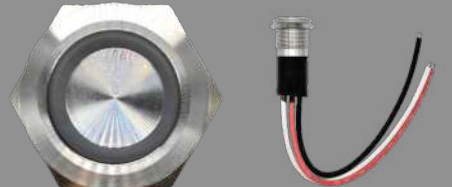
Wire Length: 6"
Of Wires: 2
LED Color: None
Button: Non-Machined Face
9150-1005-106 (On/Off)
9150-2005-106 (Momentary)



Wire Length: 6"
Of Wires: 3
LED Color: None
Button: Machined Head
9150-1045-036-C (On/Off)
9150-2045-036-C (Momentary)



Wire Length: 6"
LED Color: Blue
Button: SS w/ Translucent Ring
9150-1100-306-DTF (3 Wire) (On/Off)
9150-2100-306-DTF (3 Wire) (Momentary)



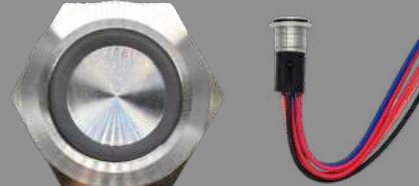
Wire Length: 6"
Of Wires: 3
LED Color: Red
Button: SS w/ Translucent Ring
9150-1101-306 (On/Off)
9150-2101-306 (Momentary)



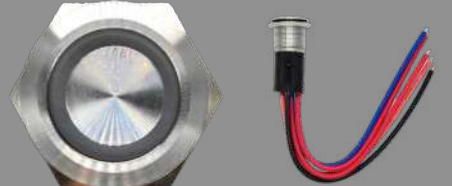
Wire Length: 40"
Of Wires: 3
LED Color: Blue
Button: SS w/ Translucent Center
9150-1013-403 (On/Off)
9150-1013-403-1 (w/ Washdown Icon)



Wire Length: 6"
Of Wires: 2
LED Color: None
Button: Machined Head
9150-1045-106 (On/Off)
9150-2045-106 (Momentary)



Wire Length: 6"
Of Wires: 5
LED Color: Blue
Button: SS w/ Translucent Ring
9150-1100-506 (On/Off)
9150-2100-506 (Momentary)



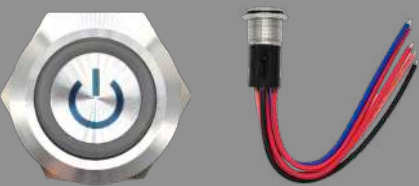
Wire Length: 6"
Of Wires: 5
LED Color: Red
Button: SS w/ Translucent Ring
9150-1101-506 (On/Off)
9150-2101-506 (Momentary)



Wire Length: 6"
Of Wires: 3
LED Color: Blue
Button: Black w/ Blue Ring
9150-1030A-306 (On/Off)



Wire Length: 6"
Of Wires: 3
LED Color: Blue
Button: SS w/ Translucent Ring
9150-1100-306 (On/Off)
9150-2100-306 (Momentary)



Wire Length: 6"
Of Wires: 5
LED Color: Blue
Button: SS w/ Translucent Ring
9150-1100-506-0069 (On/Off)



Wire Length: 6"
Of Wires: 3
LED Color: RGB
Button: SS w/ Translucent Center
9150-1102-306 (On/Off)

19mm Pre-Wired 22mm Pre-Wired



Wire Length: 6"
Of Wires: 5
LED Color: Green
Button: SS w/ Translucent Ring
9150-1102-506 (On/Off)



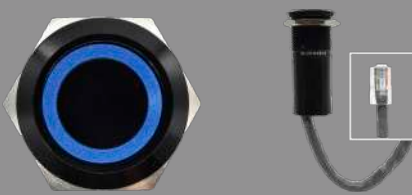
Wire Length: 38"
Of Wires: 1
LED Color: Blue
Button: SS w/ Translucent Ring
9150-2130-301-SS (Momentary)



Wire Length: 6"
Of Wires: 5 (DTF)
LED Color: Red
Button: SS w/ Translucent Ring
9150-2101-506-DTF (Momentary)



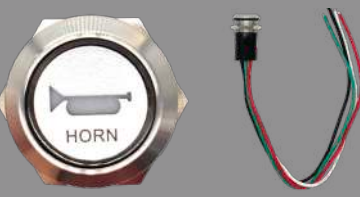
Wire Length: 6"
Of Wires: 1
LED Color: Red
Button: SS w/ Translucent Ring
9150-2131-301 (Momentary)



Wire Length: 38"
Of Wires: 1
LED Color: Blue
Button: Black w/ Blue Ring
9150-2130-301 (Momentary)



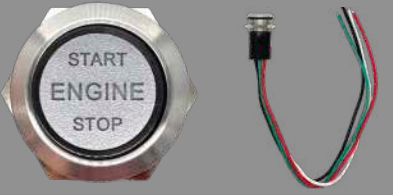
Wire Length: 5'
Of Wires: 3
LED Color: Blue
Button: SS w/ Translucent Ring
9050-1014 (On/Off)



Wire Length: 6"
Of Wires: 4
LED Color: Red
Button: SS w/ Translucent Ring
9052-2009-106
9052-2009-106-4 (W/DTM06-4S)



Wire Length: 6"
Of Wires: 4
LED Color: Red
Button: SS w/ Translucent Ring
9051-1214 (On/Off)
9051-2214 (Momentary)



Wire Length: 6"
Of Wires: 4
LED Color: Green
Button: SS w/ Translucent Ring
9052-2008-106-4