

# BUSBARS



B

# COMMON BUSBARS

B



Cover: 312314-B-021



312314-B-020

## 5 POSITION BUSBAR 100 AMP

- 1/4" Stud Size Stainless Steel
- Mounting Holes 0.20"
- Distance Between Mounting Holes: 3.56"
- Take 5.32" Pan head Machine Screws

**Max Voltage:** 300V/48VDC

**Current Rating:** 100 A

**MOQ:** 16 / Cover (25)



Cover: 312301-B-021



312301-B-020

## TERMINAL BLOCK STYLE 10 GANG - 150 AMP

- 1/4" Stud Size Stainless Steel
- Mounting Holes 0.21"
- Distance Between Mounting Holes: 5.25"
- Take 5.32" Pan head Machine Screws

**Max Voltage:** 300V/48VDC

**Current Rating:** 150 A

**MOQ:** 10 / Cover (25)



Cover: 312302-B-021



312302-B-020

## TERMINAL BLOCK STYLE 20 GANG - 150 AMP

- 1/4" Stud Size Stainless Steel
- Mounting Holes 0.21"
- Distance Between Mounting Holes: 8.25"
- Take 5.32" Pan head Machine Screws

**Max Voltage:** 300V/48VDC

**Current Rating:** 150 A

**MOQ:** 10 / Cover (25)

**Great For:** Reliable Marine Power Distribution, Reducing Wiring Clutter, And Handling 100a To 250a With Secure Connections.



Cover 312105-B-021



312105-B-020

## TERMINAL BLOCK STYLE 12 GANG - 250 AMP

- 1/4" Stud Size Stainless Steel
- Mounting Holes. 0.225"
- Distance Between Mounting Holes: 8.50"
- Take 5/32" Pan head Machine Screw

**Max Voltage:** 300V/48VDC

**Current Rating:** 250 A

**MOQ:** 10 / Cover (20)



312723-B-022 (with cover)

## TERMINAL BLOCK STYLE 10 GANG - 150 AMP DUAL STUDS

- 5/16" Stud Size Stainless Steel
- Mounting Holes 0.20"
- Distance Between Mounting Holes: 1.88"
- Take 5/32" Pan head Machine Screw

**Max Voltage:** 300V/48VDC

**Current Rating:** 150 A

**MOQ:** 10



312404-B-022

## RGB BUSBAR

- Mounting Holes. 0.0225"
- Distance Between Mounting Holes: 4.5"
- Take 5/32" Pan head Machine Screw

**Max Voltage:** 300V/48VDC

**Current Rating:** 100 A

**MOQ:** 10



B

# COMMON BUSBARS

B



Cover  
312301-B-021



Red Base  
312303-B-025



Black  
312303-B-020

## COMMON STUD BUSBAR 4 GANG

- 1/4" Stud Size Stainless Steel
- Mounting Holes 0.21"
- Distance Between Mounting Holes: 5.25"

**Max Voltage:** 300V/48VDC  
**Current Rating:** 150 A  
**MOQ:** 10



312315-B-004



Red Cover  
312315-B-205



Black Cover  
312315-B-104

## HEAVY DUTY STUD BUSBAR 4 GANG

- 3/8"-16 Stud Size Stainless Steel
- Mounting Holes
- Distance Between Mounting Holes: 6.26"

**Max Voltage:** 300V/48VDC  
**Current Rating:** 600 A  
**MOQ:** 5



312315-B-008



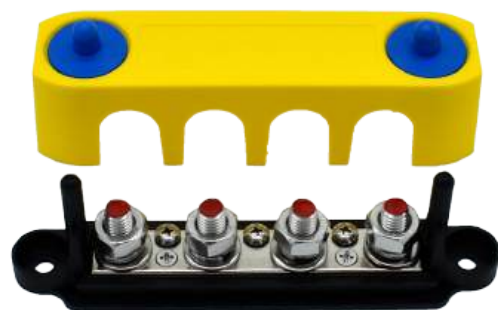
Cover 312315-B-108

## HEAVY DUTY STUD BUSBAR 8 GANG

- 3/8"-16 Stud Size Stainless Steel
- Mounting Holes
- Distance Between Mounting Holes: 11.13"

**Max Voltage:** 300V/48VDC  
**Current Rating:** 600 A  
**MOQ:** 5

**Great For:** Reliable Marine Power Distribution, Reducing Wiring Clutter, And Handling 100a To 250a With Secure Connections.



313738-B-023

## COMMON STUD BUSBAR 4 GANG - POSITIVE TERMINAL BLOCK

- 3/8" Terminals
- Mounting Holes. 0.25"
- Distance Between Mounting Holes: 5.7"
- Take 5/32" Pan head Machine Screw

**Max Voltage:** 300V/48VDC  
**Current Rating:** 250 A  
**MOQ:** 10



313756-B-023

## COMMON STUD BUSBAR 4 GANG - NEGATIVE TERMINAL BLOCK

- 5/16" Terminals
- Mounting Holes. 0.25"
- Distance Between Mounting Holes: 5.7"
- Take 5/32" Pan head Machine Screw

**Max Voltage:** 300V/48VDC  
**Current Rating:** 250 A  
**MOQ:** 10



313856-B-023

## DUAL 4 GANG BUSBAR

- 3/8" And 5/16 Terminals
- Mounting Holes. 0.25"
- Distance Between Mounting Holes: 5"
- Take 5/32" Pan head Machine Screw

**Max Voltage:** 300V/48VDC  
**Current Rating:** 250 A  
**MOQ:** 6



# DUAL STUD BUSBARS

B

# POWER POSTS



312311-B-020



Cover: 312311-B-021

## DUAL STUD BUSBAR 3/8"

- 3/8" Terminals
- Mounting Holes. 0.225"
- Distance Between Mounting Holes: 1.425"

**Max Voltage:** 48VDC  
**Current Rating:** 200 A  
**MOQ:** 5



3/8: 312311-A-024  
5/16: 312311-A-025

## DUAL STUD BUSBAR COPPER LINK

- 3/8" And 5/16" Terminals Available
- Mounting Holes. 0.225"
- Distance Between Mounting Holes: 1.425"

**Max Voltage:** 48VDC  
**Current Rating:** 200 A  
**MOQ:** N/A



312311-B-008

## LINK BAR DUAL 10MM 3/8-3/8 COPPER NICKEL PLATED

**Great For:** Securely Distributing Power And Grounding Connections In Marine And Automotive Electrical Systems.



314300-R-038

## POWER POST RED 3/8"

- 3/8" Terminals
- Mounting Holes 0.225"
- Distance Between Mounting Holes: 1 5/16"

**Max Voltage:** 48VDC  
**Current Rating:** 250 A  
**MOQ:** N/A



314300-B-038

## POWER POST BLACK 3/8"

- 3/8" Terminals
- Mounting Holes 0.225"
- Distance Between Mounting Holes: 1 5/16"

**Max Voltage:** 48VDC  
**Current Rating:** 250 A  
**MOQ:** N/A



314300-B-516

## POWER POST BLACK 5/16"

- 5/16" Terminals
- Mounting Holes 0.225"
- Distance Between Mounting Holes: 1 5/16"

**Max Voltage:** 48VDC  
**Current Rating:** 250 A  
**MOQ:** N/A





DTP04-4P-B4

## DTP BUSBAR

- Mating Connector
- Sealed Ip67

**Max Voltage:** 48VDC  
**Current Rating:** 100 A. 25 A per contact  
**MOQ:** N/A

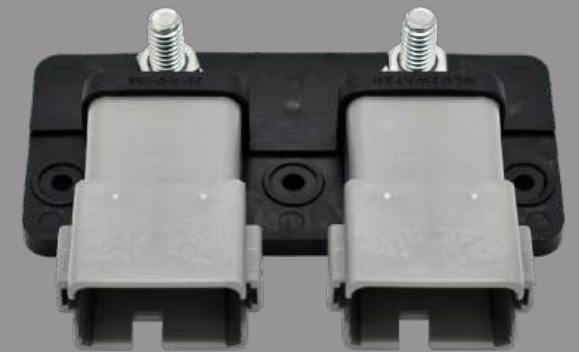


2314-D-014 (1/4")  
 2314-D-056 (5/16")

## SEALED DT BUSBAR

- 1/4" Or 5/16" Busbar
- Mounting Holes 0.225"
- Distance Between Mounting Holes 1.7"
- Take 5.32" Pan head Machine Screws
- Sealed IP67

**Max Voltage:** 48VDC  
**Current Rating:** 150 A  
**MOQ:** N/A



2314-D-256

## SEALED DUAL DT 12 POSITION BUSBAR

- 5/16" Terminals
- Mounting Holes 0.225"
- Distance Between Mounting Holes 3.8"
- Take 5.32" Pan head Machine Screws
- Sealed IP67

**Max Voltage:** 48VDC  
**Current Rating:** 300 A  
**MOQ:** N/A

**Great For:** Reliable Marine Power Distribution, Reducing Wiring Clutter, And Handling 100a To 250a With Secure Connections.



2324-D-056

## SEALED DTP 4 POSITION BUSBAR

- 5/16" Terminals
- Mounting Holes 0.175"
- Distance Between Mounting Holes 4"
- Take 5/32" Pan head Machine Screw
- Sealed IP67

**Max Voltage:** 48VDC  
**Current Rating:** 200 A  
**MOQ:** N/A



2314-B-000 (Dual Stud)

## SEALED FCI BUSBAR

- 5/16" Terminals
- Mounting Holes 0.175"
- Distance Between Mounting Holes 4"
- Take 5/32" Pan head Machine Screw
- Sealed IP67

**Max Voltage:** 48VDC  
**Current Rating:** 150 A  
**MOQ:** N/A



B

# TERMINAL STRIPS



16000-01-0A

## SNAP TERMINAL STRIP END PIECE PART A

- Mounting Holes 0.125"
- Distance Between Mounting Holes: 0.40"
- **MOQ:** 25



16000-02-0B

## SNAP TERMINAL STRIP SCREW PIECE PART B NICKEL PLATED COPPER

- Mounting Holes 0.125"
- Distance Between Mounting Holes: 0.40"
- Current Rating 30 A
- **MOQ:** 25



16000-03-0T

## TWEEZERS FOR SNAP 30A TERMINAL STRIP

- Used For The Disconnection Of Terminals

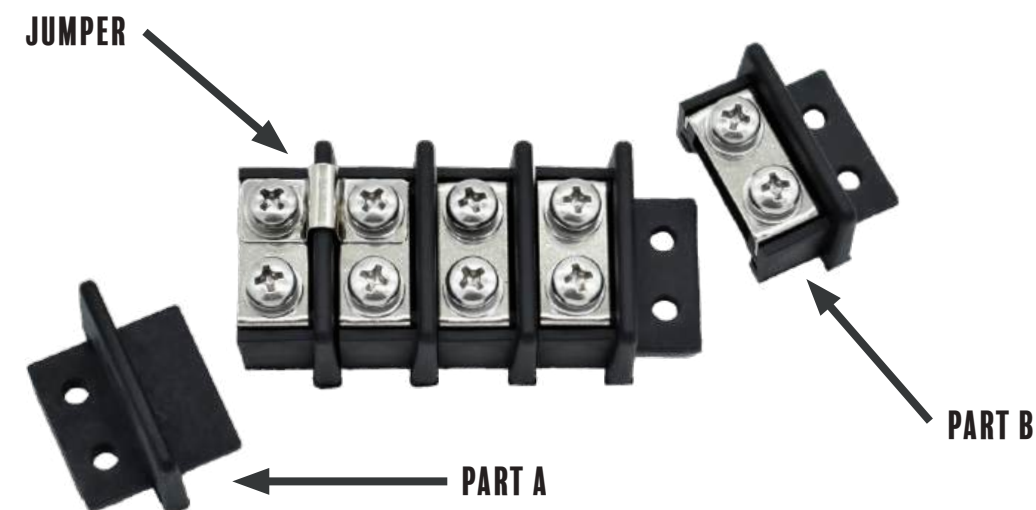
**Great For:** Organizing And Distributing Wiring In Marine And Automotive Systems.



16000-02-0J

## 30 A TERMINAL STRIP JUMPER NICKEL PLATED COPPER

- **MOQ:** 25



## 30 A TERMINAL STRIP LAYOUT

- Customize Your Setup to Fit Your Exact Needs
- Combine Part B to Desired Length, Then Cap Off with Part A to Create Terminal Strip
- Easily Link Them Together Using Our Nickel Plated Copper Jumper.

B