

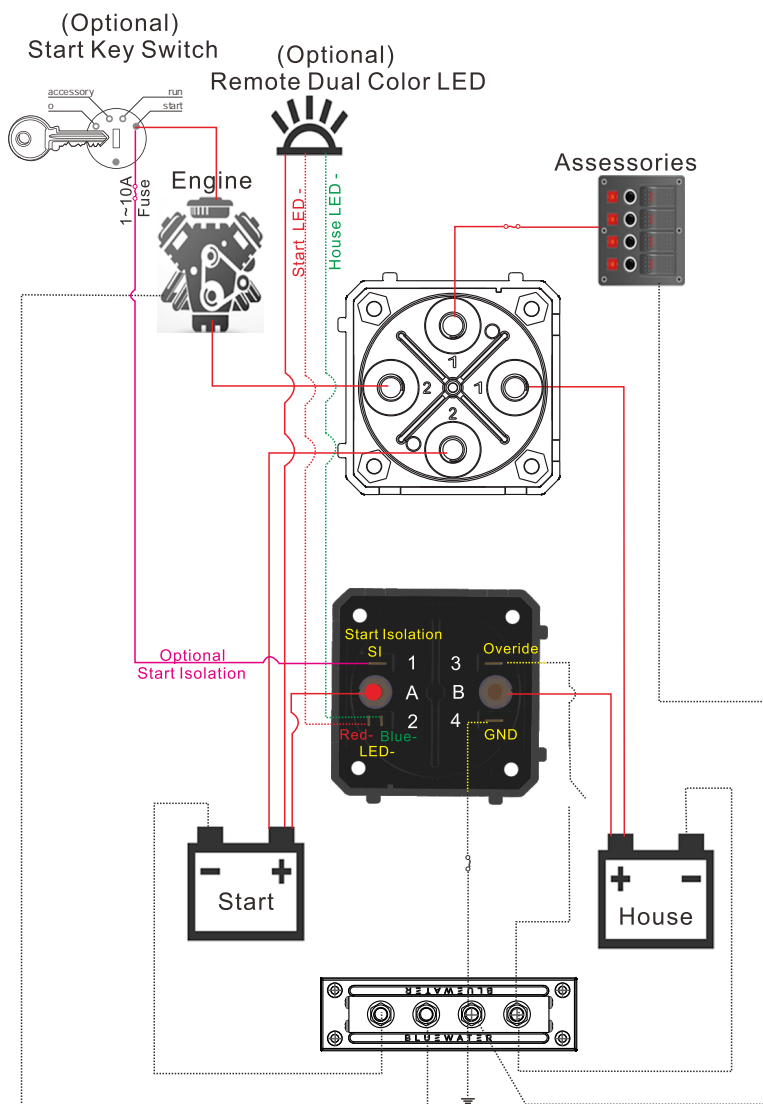
## SI - Auto Charging Relay

120A

### FEATURES

- Automatically combines two batteries when charging and isolates the two batteries when not charging.
- Allows temporary isolation of house loads from engine circuit during engine cranking to protect sensitive electronics : Start Isolation (SI) indicated by Slow Flash Yellow LED
- Supports high-output alternators up to 120 Amps
- Dual Color LEDs light show two batteries individual status : Fault / Charging / Discharging / Combine / SI / Override
- Dual Sensing - senses charge source on either battery bank
- Under voltage lockout - will not close when the lower battery is below 9.5V @ 12V or 19V @ 24V system - Lockout indicated by Fast Flash Red LED (Start Batt), or Fast Flash Green LED (House Batt)
- Waterproof rated IP67 - temporary immersion for 30 minutes
- Ignition protected - safe for installation aboard gasoline powered boats
- When the voltage of the main battery is insufficient to start the engine, Connect the "OVERRIDE" to the negative pole to start the engine indicated by Fast Flash Yellow LED

### WIRING



This diagram is to show connection points only, and does not represent a complete installation diagram. see ABYC E-11 Standards for wire size and fuse values

### SPECIFICATION

Parts # 9800-7101-00

Continuous Rating	120A	
Intermittent Rating (5 min)	140A	
Operating Current (combine)	135mA	
Operating Current (open)	2.16mA	
Terminal Stud Size	3/8" - 16 (M10)	
Terminal Stud Torque	140 in-lbs (15.8 Nm)	
<b>Relay Contact Position</b>		<b>12V DC</b> <b>24V DC</b>
Combine	(30 sec.)	13.60V DC    27.2V DC
	(2 min.)	13.00V DC    26.0V DC
Open Low	(10 sec.)	12.35V DC    24.7V DC
	(30 sec.)	12.75V DC    25.5V DC
Over Voltage Lockout	16.00V DC    - - -	
Under Voltage Lockout	9.50V DC    19.0V DC	
Under Voltage Reset	10.00V DC    20.0V DC	

### Drawing

