

Heavy Duty Busbar

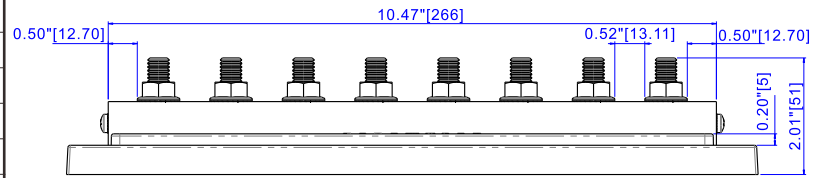
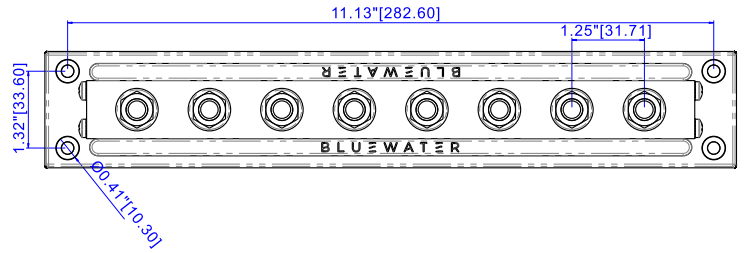
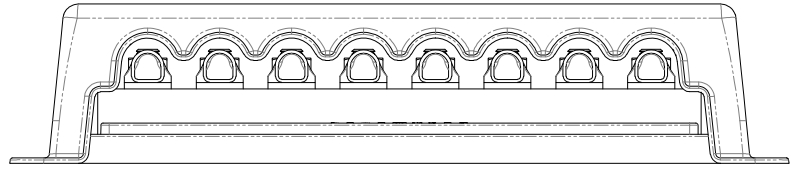
600 Amp

Features

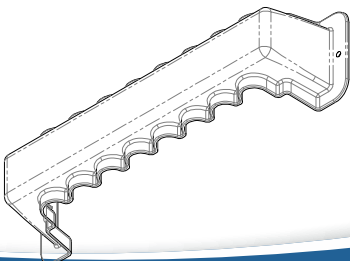
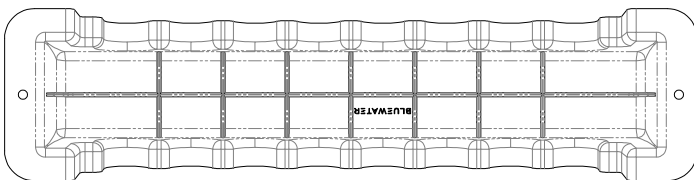
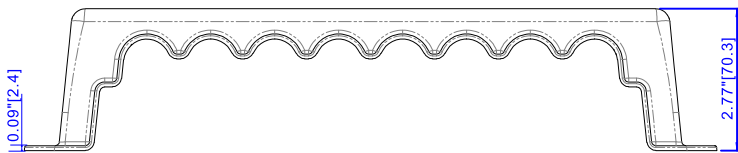
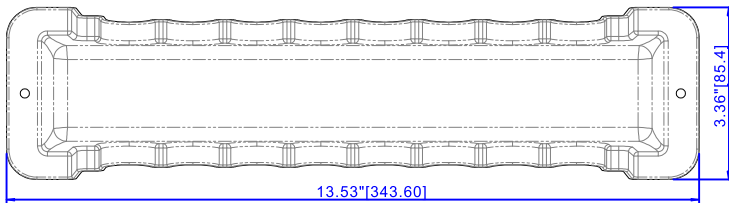
- ▶ Heavy Duty Busbar Terminal Blocks.
- ▶ Hi-Amp Rated to 600 Amp.
- ▶ 3/8"-16 Stud Size Stainless Steel
- ▶ Mounting Holes take 1/4" Screws
- ▶ Busbar Part # : 312315-B-008
- ▶ Cover Part # : 312315-B-108

Specification

Maximum Voltage	300V AC / 48V DC
Terminal Studs	8
Terminal Type	3/8" - 16 Stud
Terminal Stud Torque	140 in-lb (15.82 Nm)
Continuous Rating	545A AC / 600A DC
Base Material	Reinforced Polycarbonate 94V-0
Cover Material	Reinforced Polycarbonate 94V-0
Bus Material	Tin-Plated Copper CDA 110/UNS11000
Screw Terminal Torque	15 in-lb (1.69 Nm)
Stud Torque	140 in-lb (15.82 Nm)
Weight	1.72lb (0.78 kg)



Cover Part #: 312315-B-108



Base Part #: 312315-B-008

