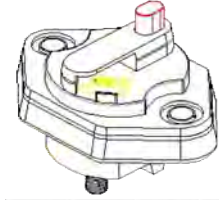


Thermal Device MidRange Circuit Breaker

IP 66 60Amp

78000-9600-XX

Type III + Push to Trip 32VDC 60Amp max



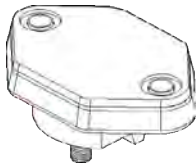
78001-9600-XX

Type III 32VDC 60Amp max

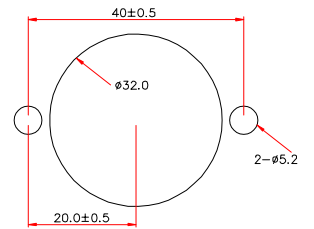
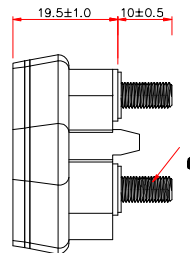
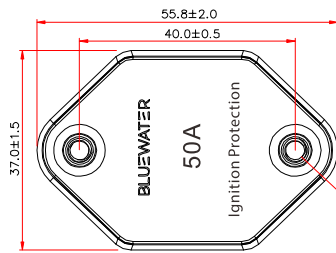
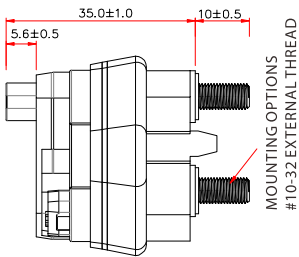
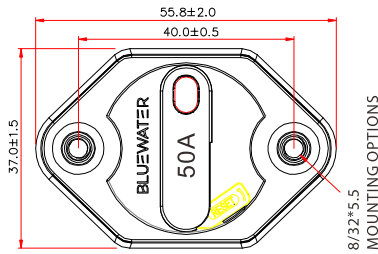


78002-9600-XX

Type I 32VDC 60Amp max

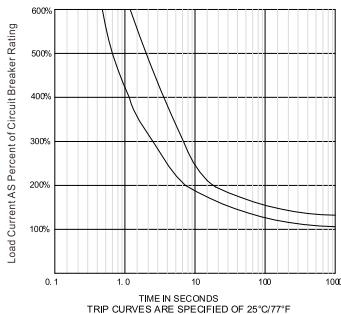


Circuit Breaker Type	Single pole, Thermal device
Rating	10~60A, @32VDC
Interrupt Capacity	Circuit Protection (2.5kA) per ABYC E-11
Operation Temperature	-40°F(-40°C) to 185°F(85°C)
Storage Temperature	-40°F(-40°C) to 260°F(125°C)
Housing	Thermal plastic UL rated 94V0
Splash and dust proof	IP66 grade
Standard	meet S.A.E. J1625, J1171, ABYC E-11 UL1500 (Ignition protection)
Stud size	#10-32 threaded studs
Torque rating	25in-lb (2.8Nm) max.
Insulation Resistance	100M, 500VDC
Dielectric Strength	1800V 1 minute
Rivet and Stud	Copper with nickel plated



Trip Time Curves

- Trip Time Curves



Temp Derating Curves

- Temperature Derating Curves

