

Two Circuit Battery Switch

Two Circuit 300A DC

Caution

- ▶ Disconnect positive battery terminal before installing.
- ▶ Consult marine electrical professional for proper wiring application.

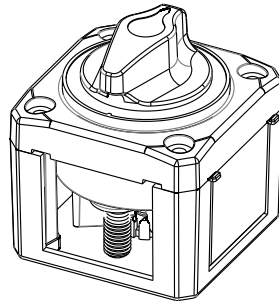
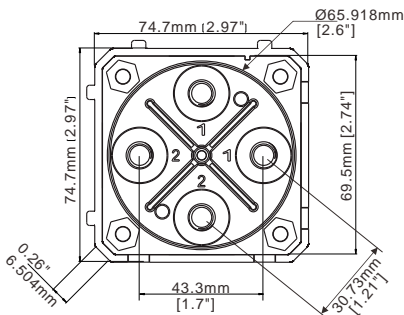
Installation

- ▶ Refer to the latest edition of NFPA 302 and/or ABYC E11 Standard for installation information.
- ▶ Attach one 4/0AWG cable per terminal to meet ratings.
- ▶ Battery cable terminals must be attached under nut and lock washer. Torque 120in-lb (13.56N•m).

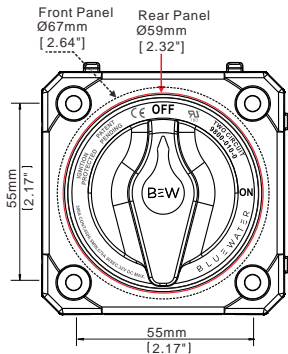
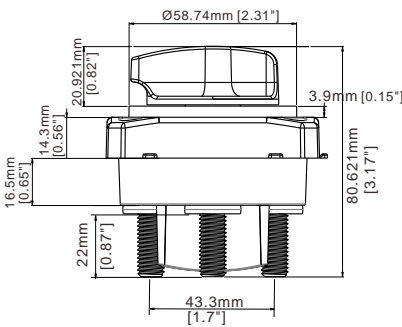
Operation

- ▶ Turn all appliances OFF before turning the battery switch to OFF.
- ▶ Do not switch to OFF while engine is running.

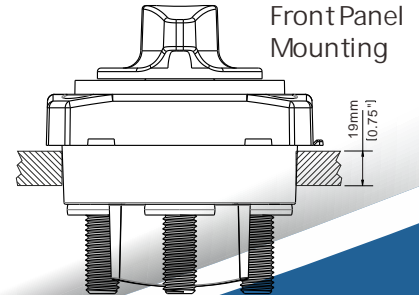
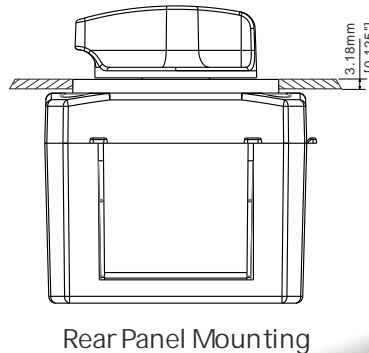
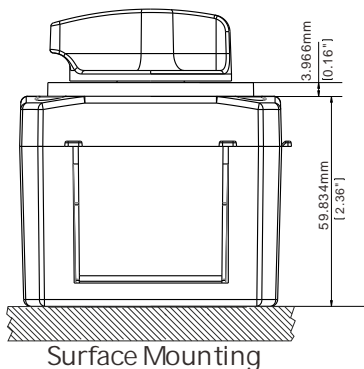
Dimension



Mounting Holes



Mounting



Parts# 9800-010-X

- ▶ Color: 9800-010-0 (Black), 9800-010-1 (Red)

Continuous Rating	300Amps DC
Intermittent Rating	500Amps DC 5min.
Cranking Rating	900Amps DC 30sec.
Maximum Voltage	48Volts DC
Switch Operating	-22°F to 284°F
Mounting	Surface / Front, Rear Panel
Cable Size	4/0AWG (120mm ²)
Standard	meet S.A.E. J1625, J1171, ABYC E-11 UL1500 (Ignition protection)
Stud size	2pcs 3/8" -16
Torque rating	120in-lb (13.56Nm) max.
Studs and Nuts	Copper with Tin plated

Wiring

